

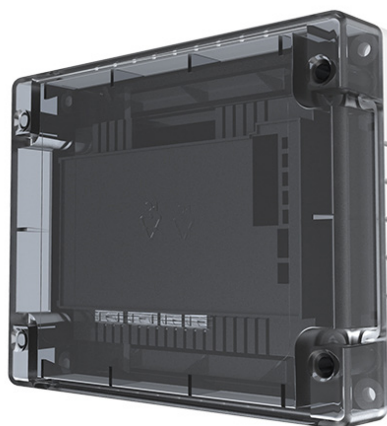
# ESPintelligent

## CHQ-SZM2(SCI)

### ANALOGUE SINGLE ZONE MODULE

#### Features

- ▶ Loop powered
- ▶ Up to 6 Conventional Detectors
- ▶ Single loop address
- ▶ Remote LED output
- ▶ Fully monitored for short and open circuit faults
- ▶ DIN rail version available
- ▶ Both models feature an integral short-circuit isolator
- ▶ Both models approved by LPCB & VdS.



#### Description

Model CHQ-SZM2(SCI) is a Single Zone Monitor designed to allow up to 6 conventional detectors to be interfaced to Hochiki's ESP analogue addressable system. The unit is also available as a DIN Rail mountable version; with or without an integral short-circuit isolator. The CHQ-SZM2(SCI) utilises simple DIL switches for reliable addressing. A back box is also available (CHQ-BACKBOX) which, when used in conjunction with the CHQSZM(SCI), increases the IP rating to IP65.

The conventional zone on the CHQSZM2(SCI) does not support any line continuity options; if Call Points are being interfaced they should be wired at the beginning of the zone.

#### Specification

Ordering codes	CHQ-SZM2(SCI)	(module with SCI)
	CHQ-SZM2/DIN(SCI)	(DIN module with SCI)
Operating voltage	17 - 41 V dc	
Quiescent current	260 $\mu$ A	
Current consumption	22 mA + 20 % (polling)	
Current in short-circuit	8 mA	
Maximum short-circuit current (Loop)	1 A	
E.O.L device	TE-RH-E (polarity conscious)	
Zone voltage	15.3 V - 17.1 V	
Zone resistance	50 $\Omega$ (Max)	
Zone capacitance	0.3 $\mu$ F (Max)	
Detectors per zone	DCA, DFB, DFE – No limit. SLG, SLK, SLR, SIF, SIH, SIJ, DCC, DCD, DFJ – 6 max. SPB-ET, SPC-ET or SRA-ET– Only one and no other detectors. HF-24 – only one and no other detectors, DRD-E – 3 max, CCP-E – No limit	
Operating Temperature Range	-10 °C to +50 °C	
Storage Temperature Range	-30 °C to +60 °C	
Maximum Humidity	95%RH Non Condensing (at 40 °C)	
Weights (g)	CHQ-SZM2(SCI) 328	L=157 x W=127 x D=35 (module inc lid) D=79 (module inc lid & CHQ-BACKBOX) (add 235 to module weight when using CHQ-BACKBOX)
Dimensions (mm)	CHQ-SZM2/DIN(SCI) 114	L=119 x W=108 x D=24
Colour and enclosure material	CHQ Module & CHQ-BACKBOX White ABS, DIN Module Green ABS, Module Lid Semi-Opaque Black ABS as standard (white version – CHQ-LID(WHT) also available)	

Fire alarm control panel compatibility required for these products.